

Buffering Environmental Extremes: The Documentation, Treatment and Monitoring of a Wooden Luba Mboko Figure

Emily Rezes

Advisor Ellen Pearlstein

UCLA/Getty Interdepartmental Program
in the Conservation of Archaeological and
Ethnographic Materials

ANAGPIC
April 13, 2019



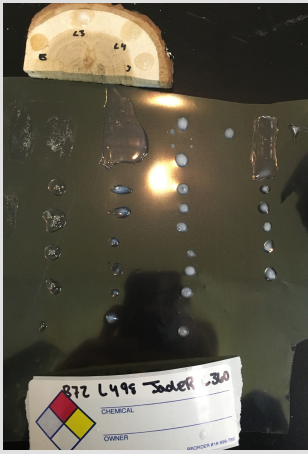
Mboko
(bowl holder) Figure
Connecting Cultures
Mobile Museum
(CCMM)
Before Treatment



Propagation of a radial/longitudinal crack near the proper right ear



Propagation of a crack at the top of the head, near the center of the growth rings



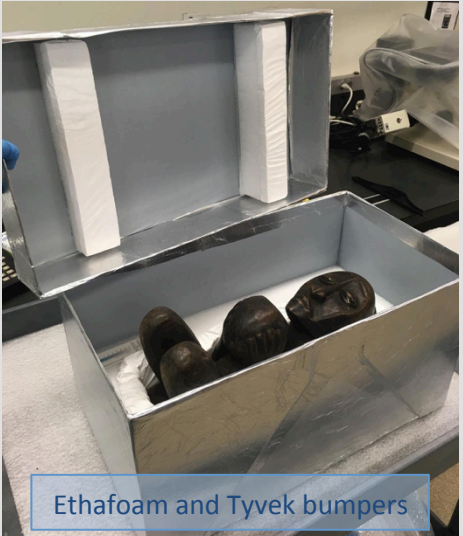
Mock-ups of B72 and water-based acrylic emulsions



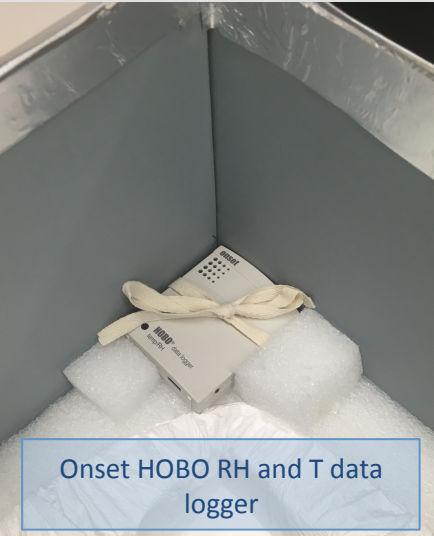
2:1 ratio of Lascaux 498 and 360, diluted with water, being wicked into fine cracks



Cavity packing with Ethafoam and soft Tyvek



Ethafoam and Tyvek bumpers



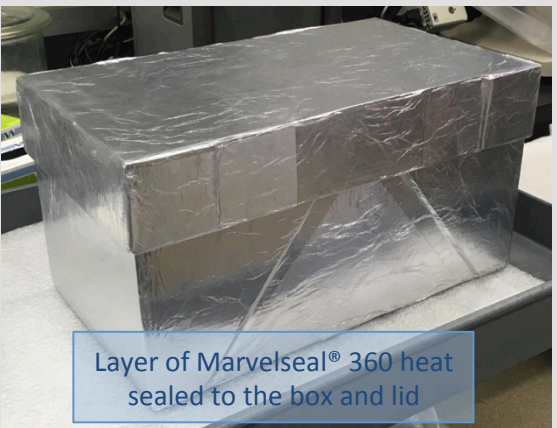
Onset HOBOTec RH and T data logger



Luba Mboko Figure; AT image, proper right



Archival blue board box

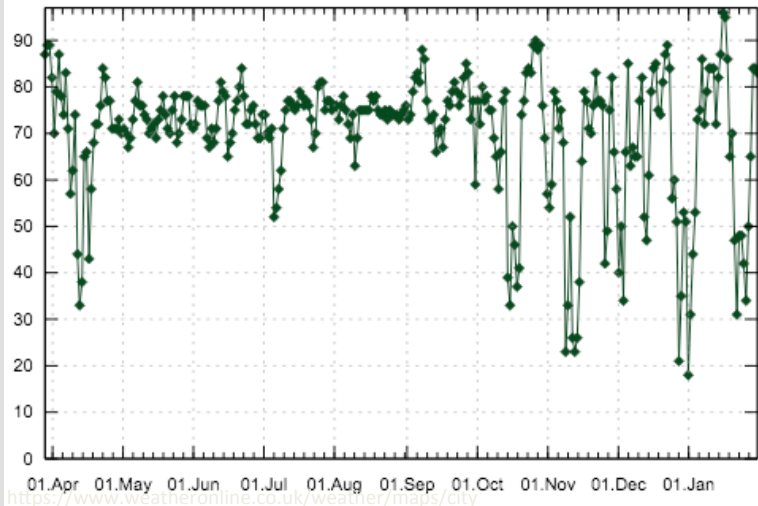


Layer of Marvelseal® 360 heat sealed to the box and lid



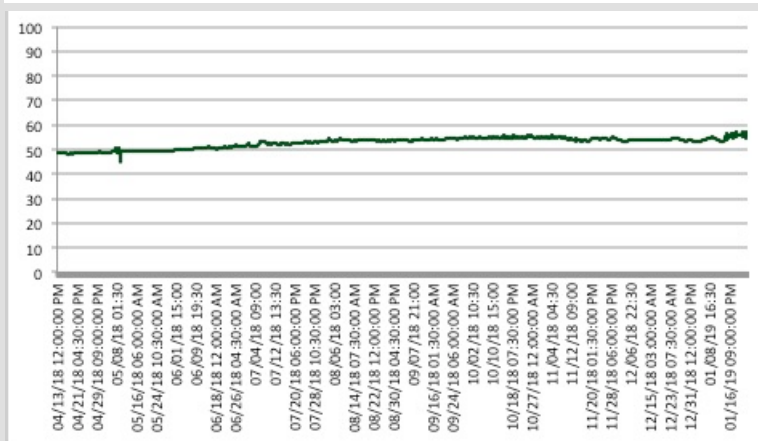
Craft foam core that was hot glued to the outer surface of the box and lid

April 2018 – January 2019 (CCMM)



% RH at Los Angeles International Airport
81% range

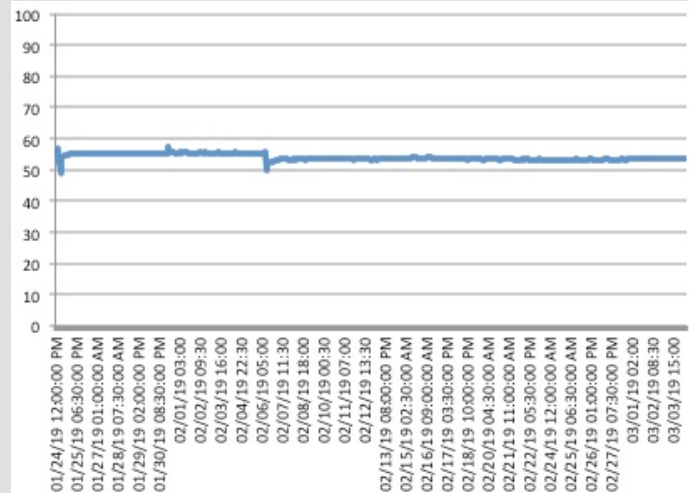
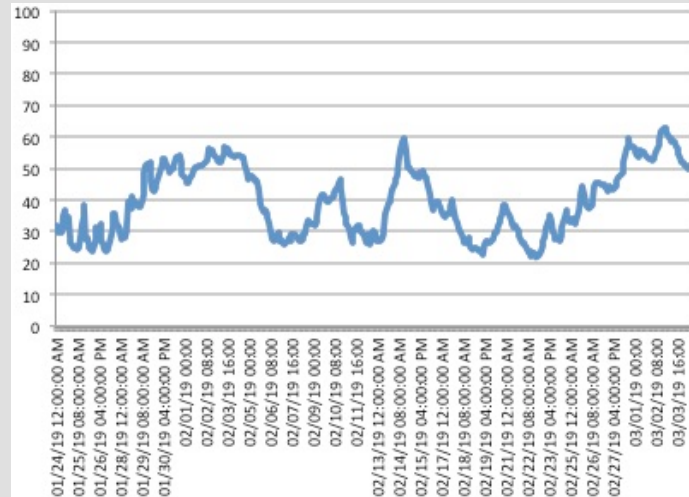
%RH within Object Storage at the Getty Villa Teaching Labs
41% range
39.5% mean



% RH Inside the Microclimate Housing
12% range
52.8% mean

% RH Inside the Microclimate Housing
9% range
54.1% mean

January – March 2019 (Getty Villa)



Thank You!



Acknowledgements

- Ellen Pearlstein, UCLA/Getty
- Vanessa Muros, UCLA/Getty
- The Connecting Cultures Mobile Museum